

Northland

Change in land area between 1996 and 2020 (ha)

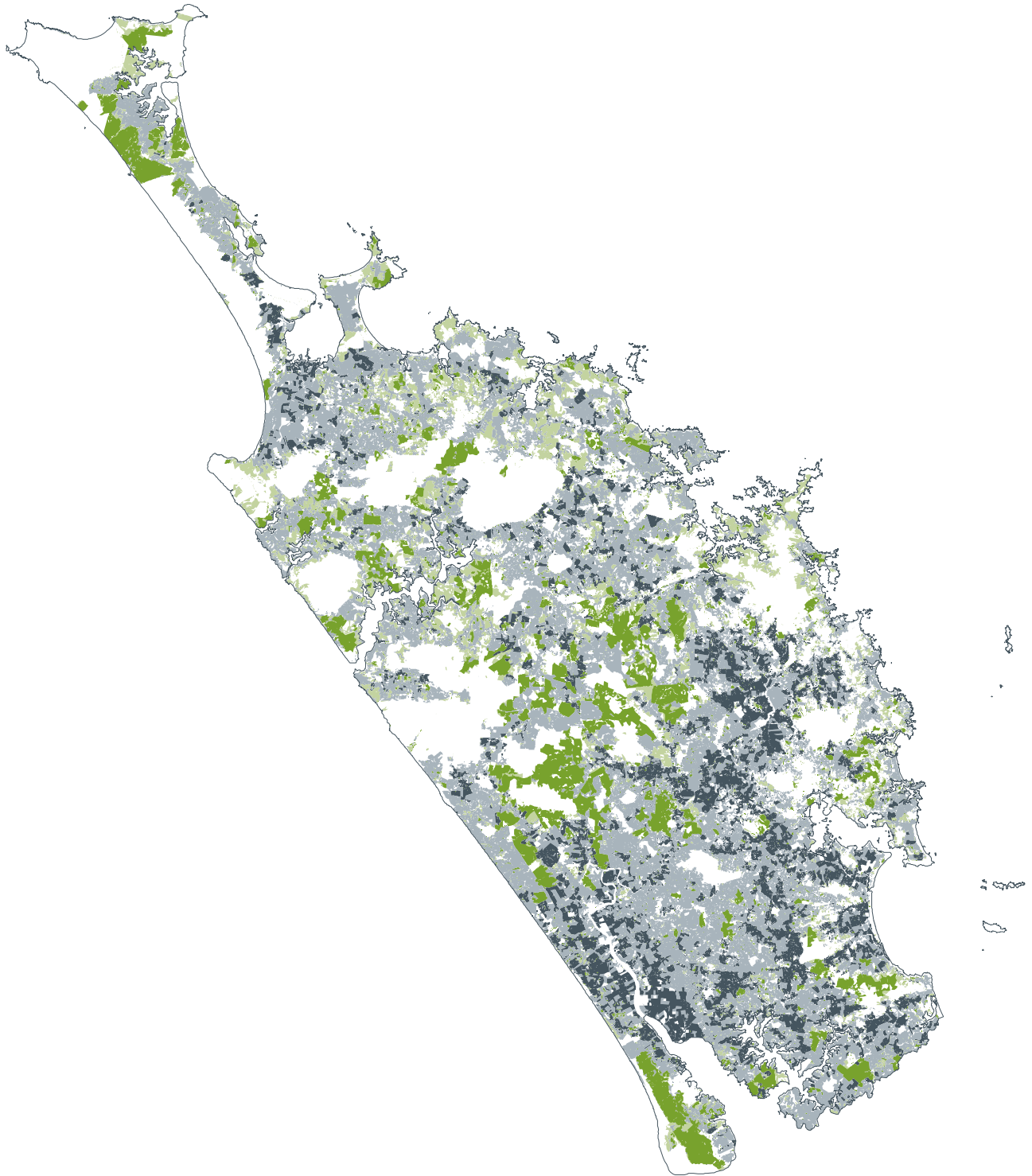
	Sheep/Beef	-10,100
	Dairy	-12,600
	Forestry	+39,600
	Scrub	-17,900

Difference between 2020 nutrient load compared with 1996 nutrient load

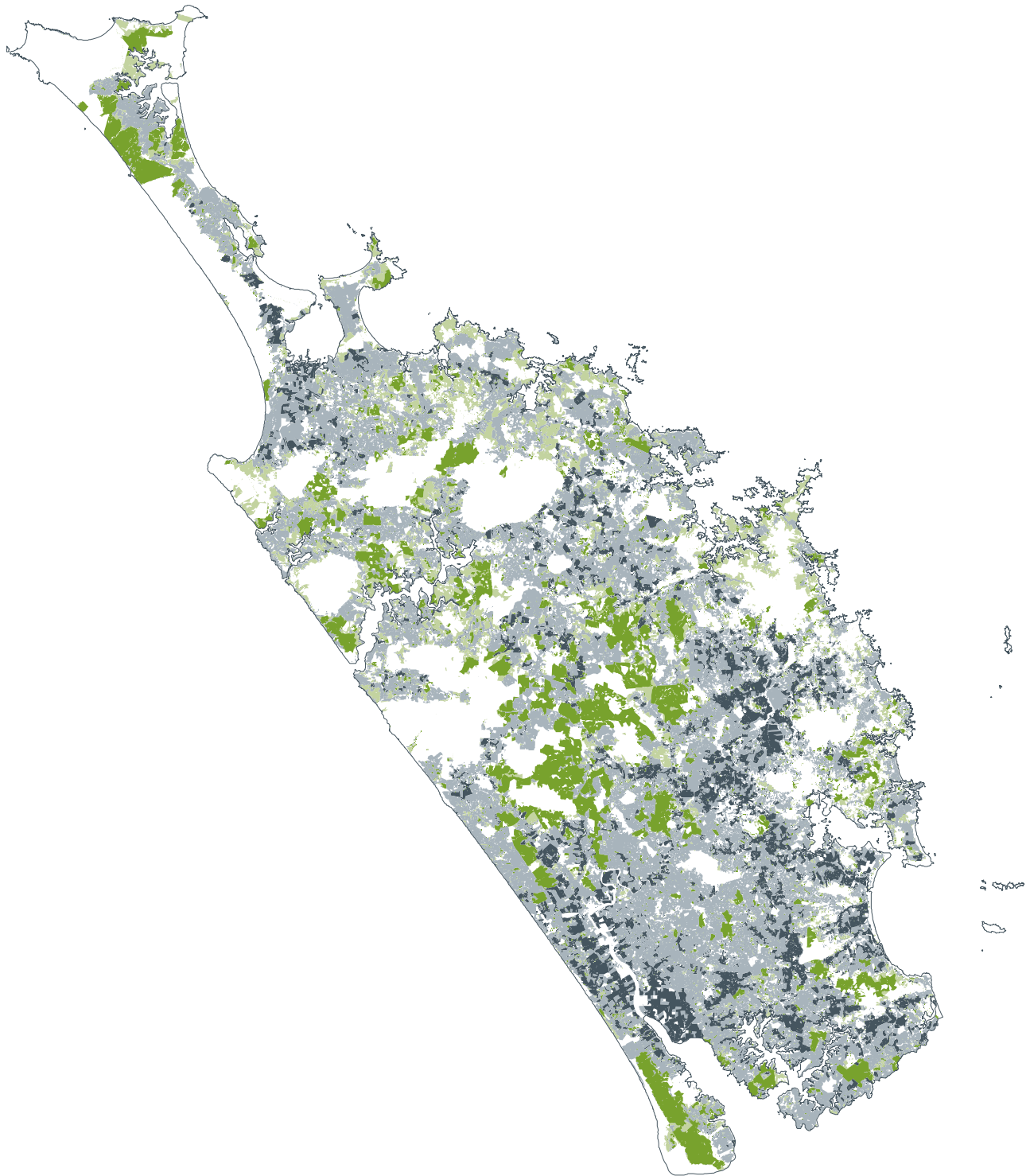
Nitrogen +1 %

Phosphorus -3%

1996



2008



2020

