





Bay of Plenty

Change in land area between 1996 and 2020 (ha)

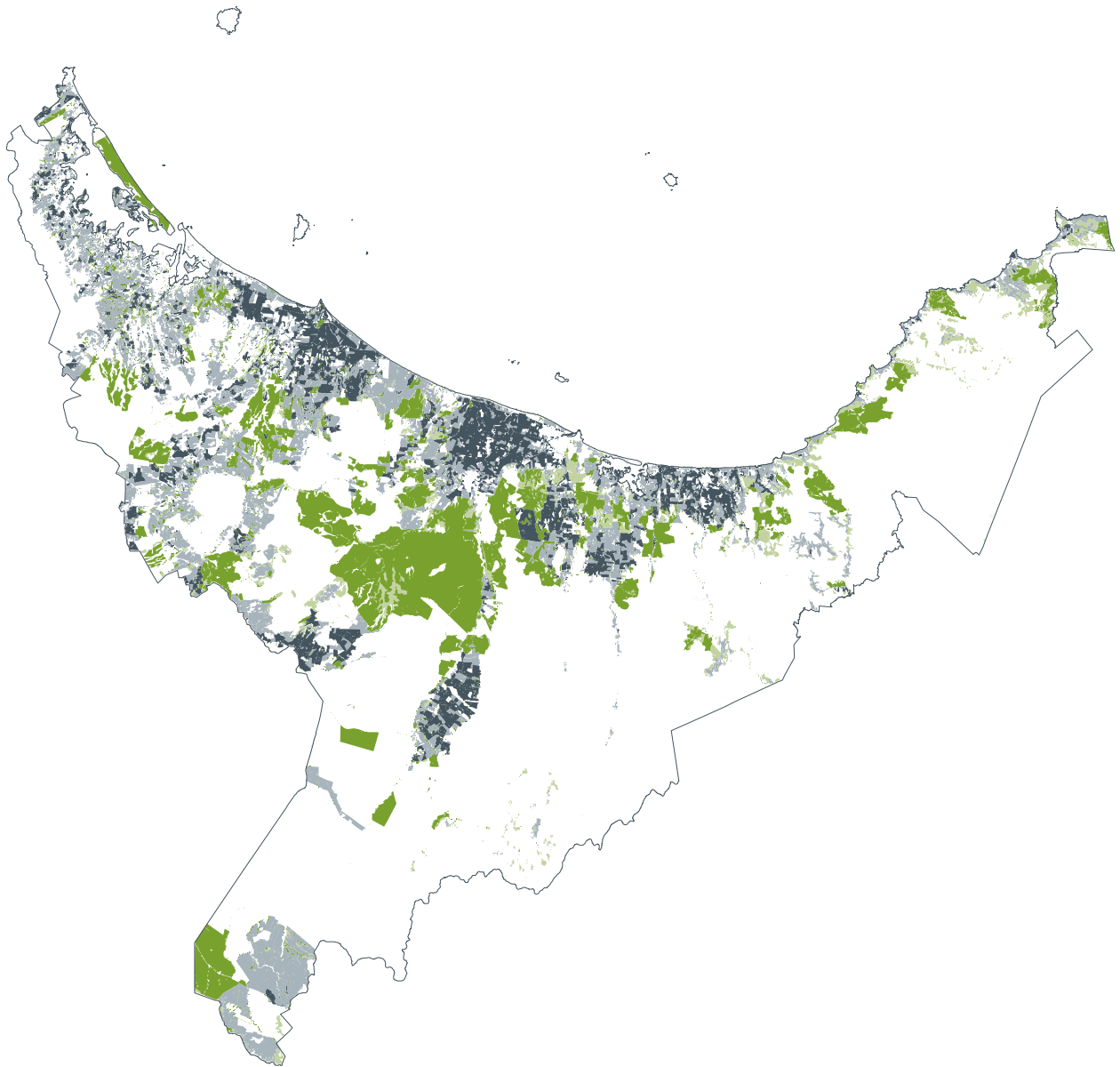
	Sheep/Beef	-28,900
	Dairy	+8,800
	Forestry	+20,400
	Scrub	-3,000

Difference between 2020 nutrient load
compared with 1996 nutrient load

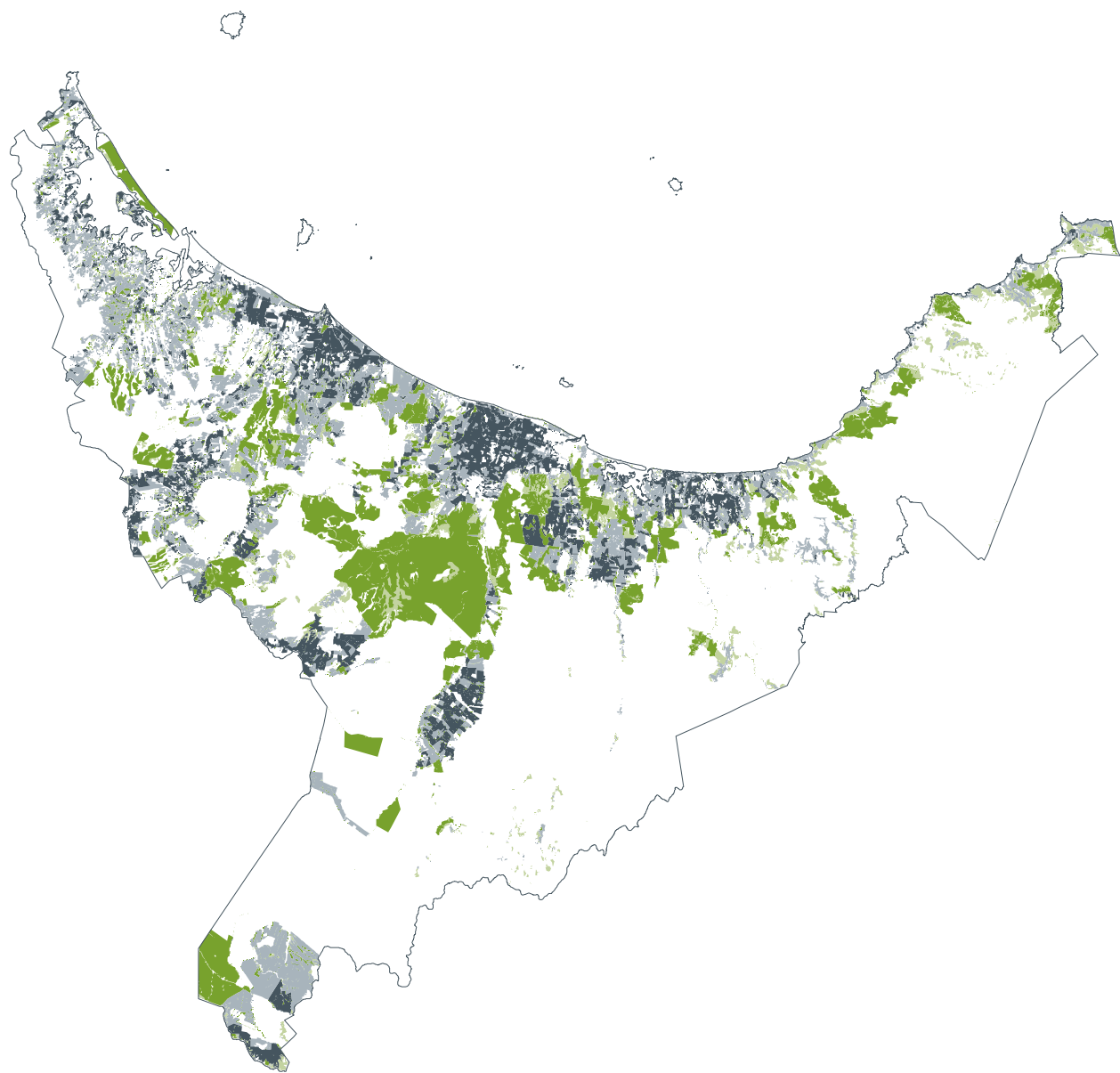
Nitrogen +6 %

Phosphorus -2 %

1996



2008



2020

