



Canterbury

Change in land area between 1996 and 2020 (ha)

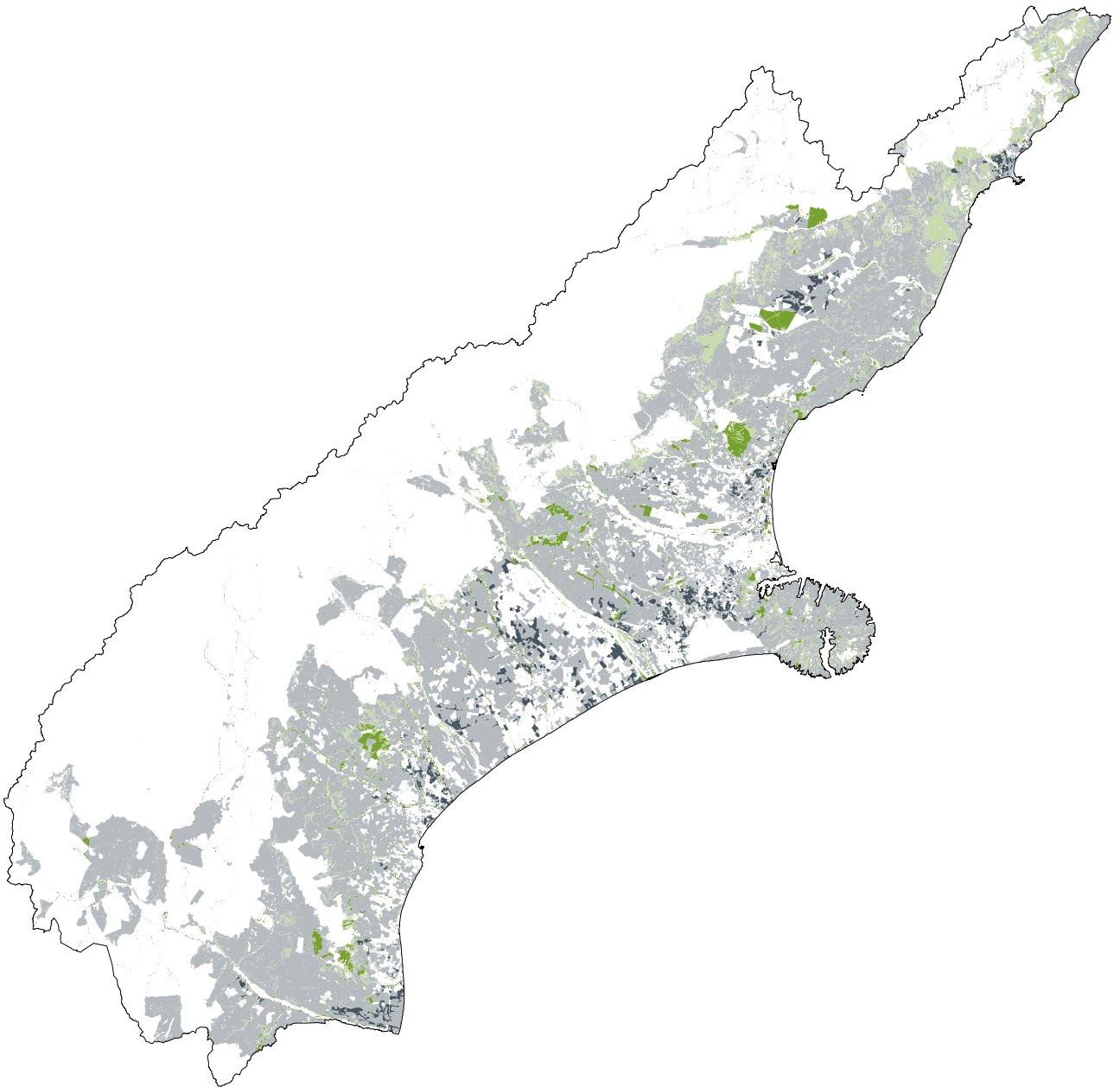
	Sheep/Beef	-342,800
	Dairy	+222,100
	Forestry	+21,300
	Scrub	+89,200

Difference between 2020 nutrient load
compared with 1996 nutrient load

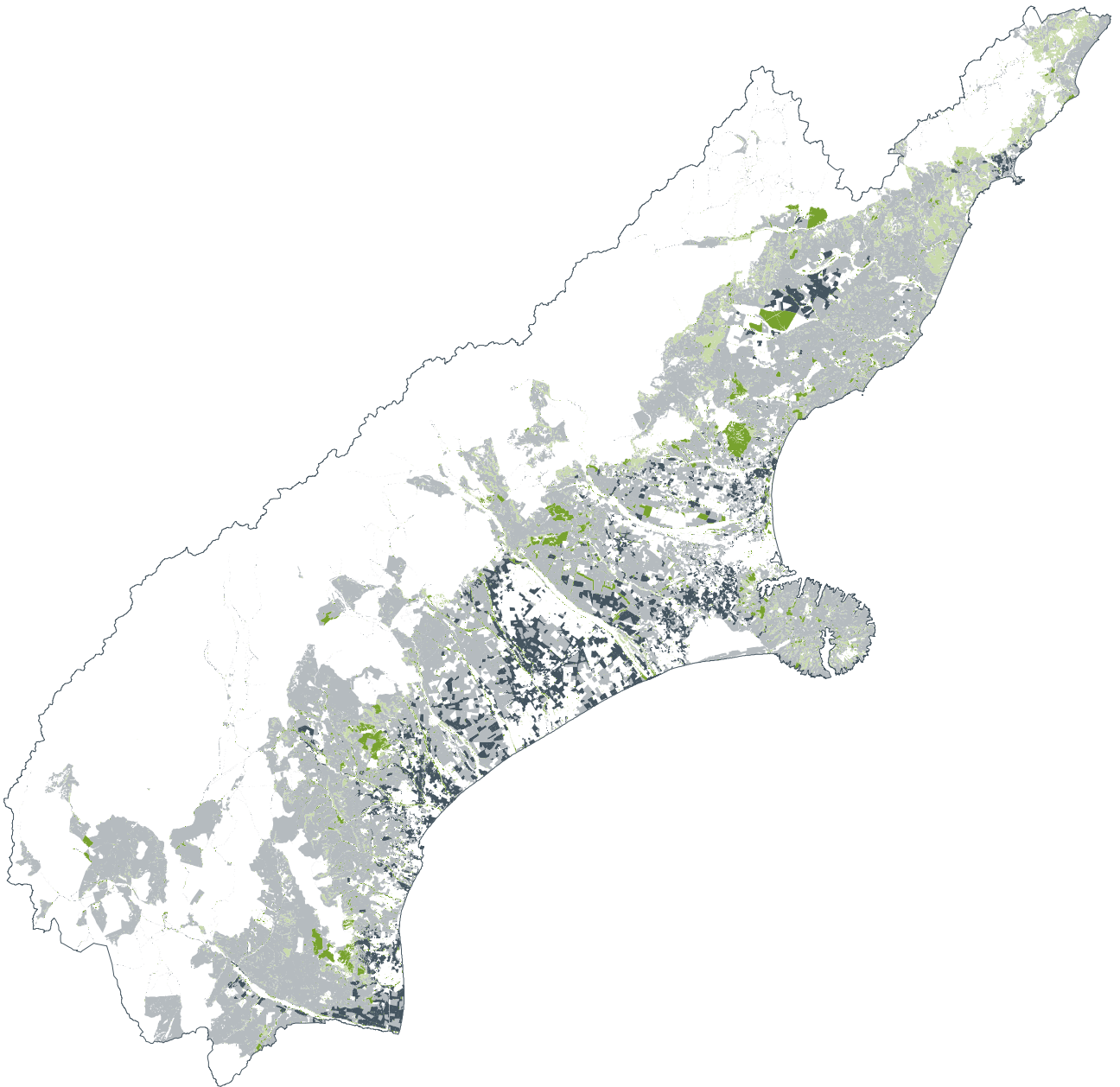
Nitrogen +45 %

Phosphorus +9 %

1996



2008



2020

