

Southland

Change in land area between 1996 and 2020 (ha)

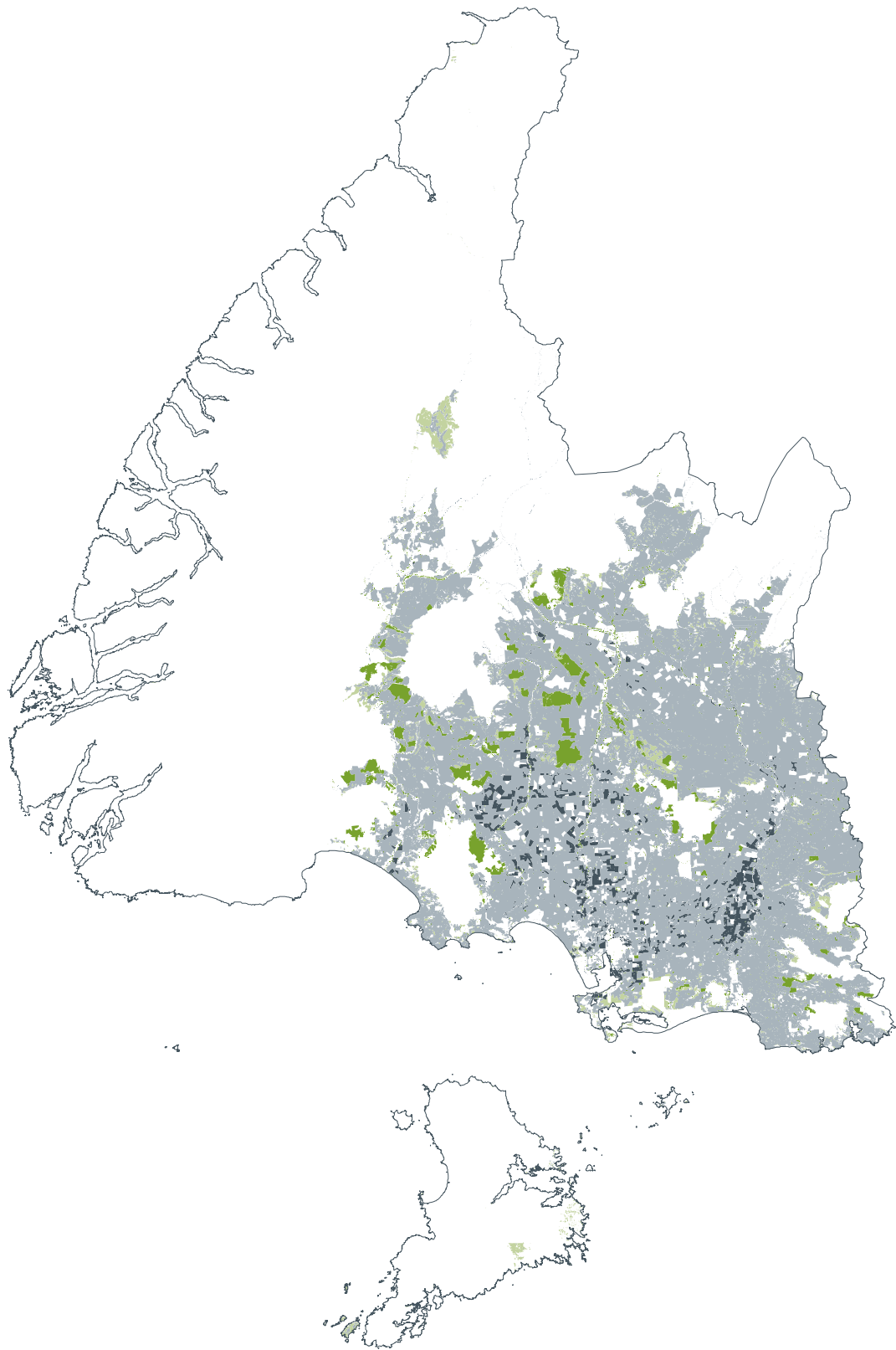
	Sheep/Beef	-182,700
	Dairy	+164,800
	Forestry	+20,300
	Scrub	-3,000

Difference between 2020 nutrient load
compared with 1996 nutrient load

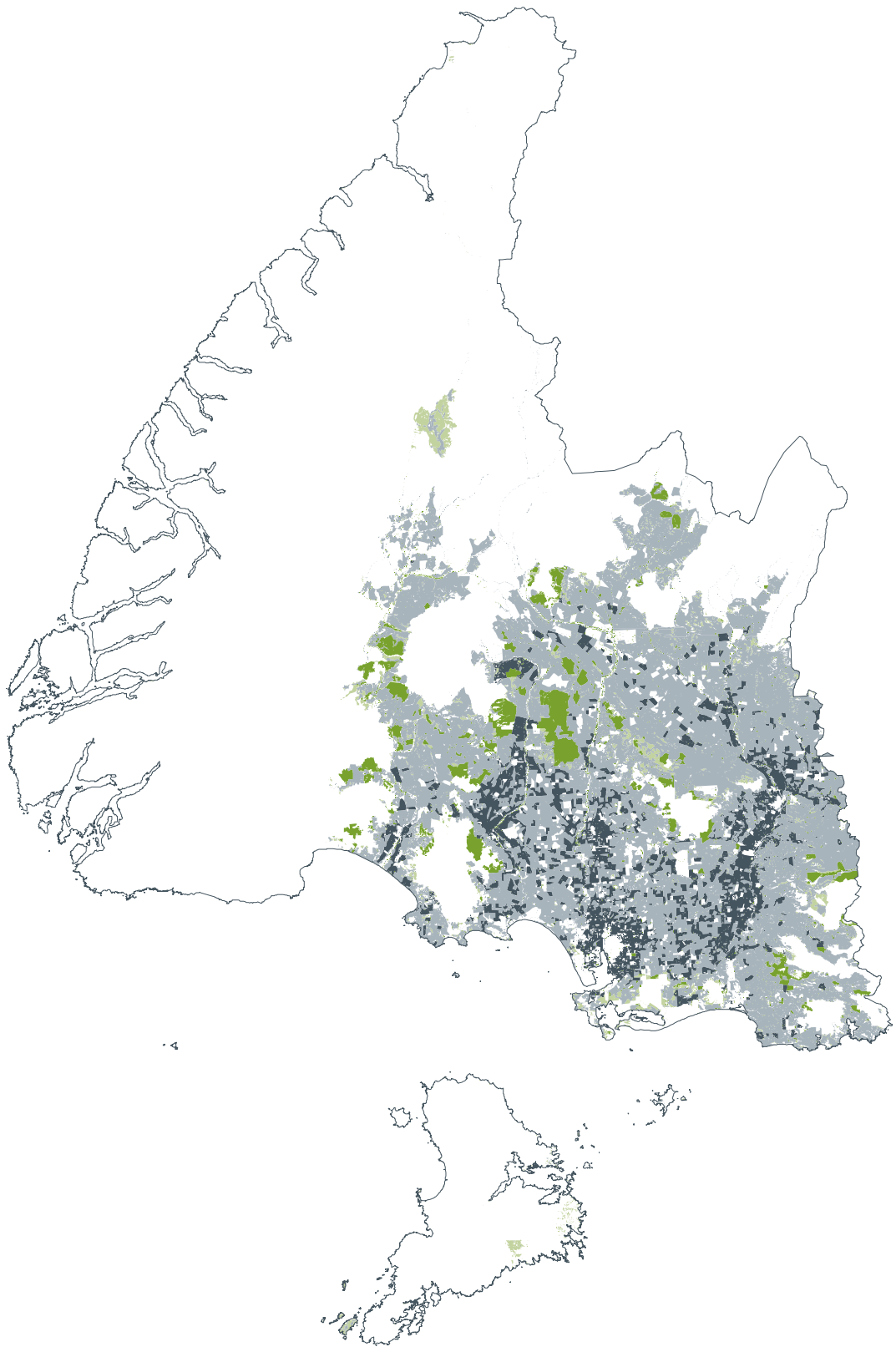
Nitrogen +28%

Phosphorus +10%

1996



2008



2020

