





## Marlborough

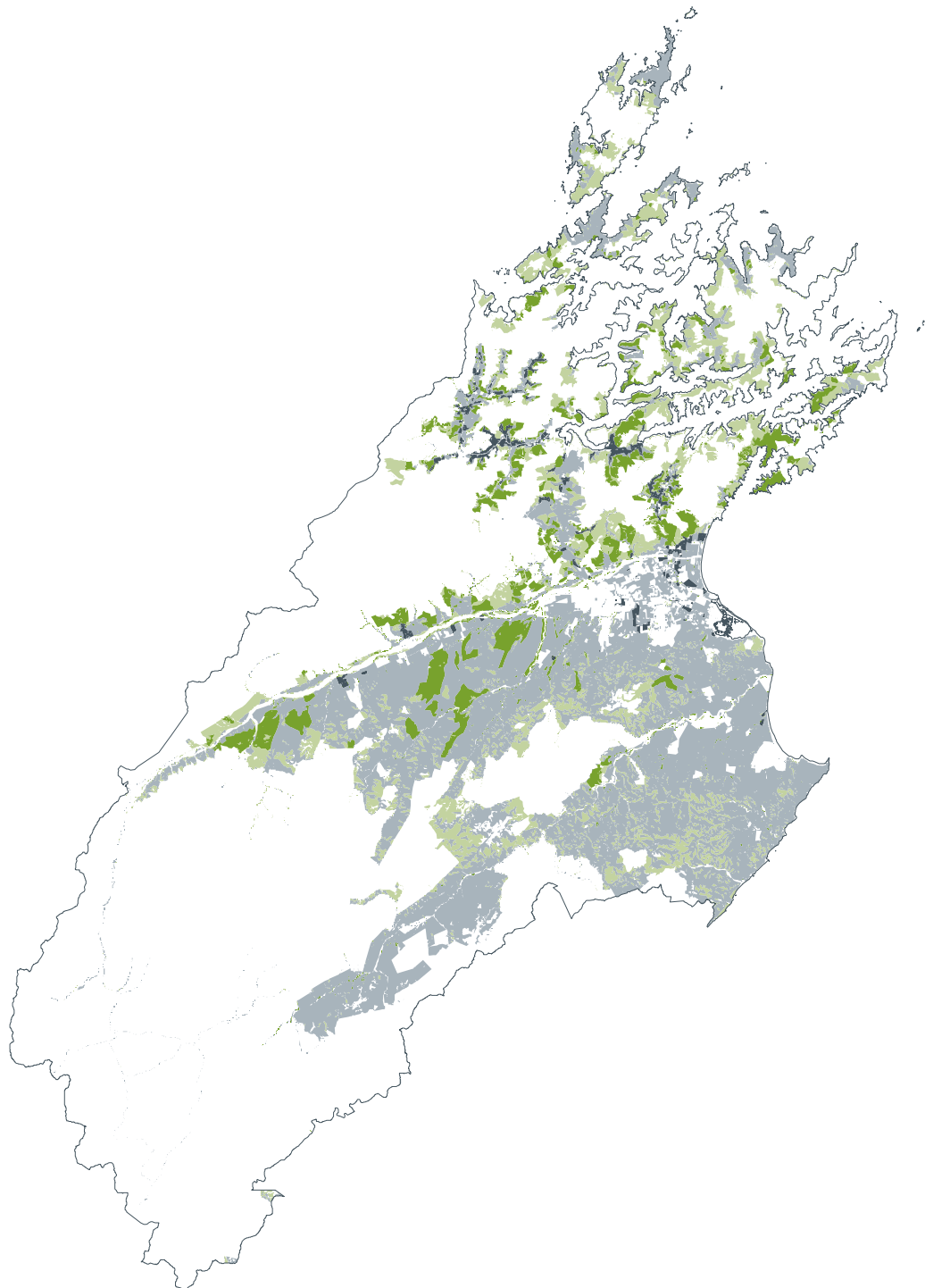
Change in land area between 1996 and 2020 (ha)

	Sheep/Beef	-66,800
	Dairy	+3,200
	Forestry	+28,200
	Scrub	+13,800

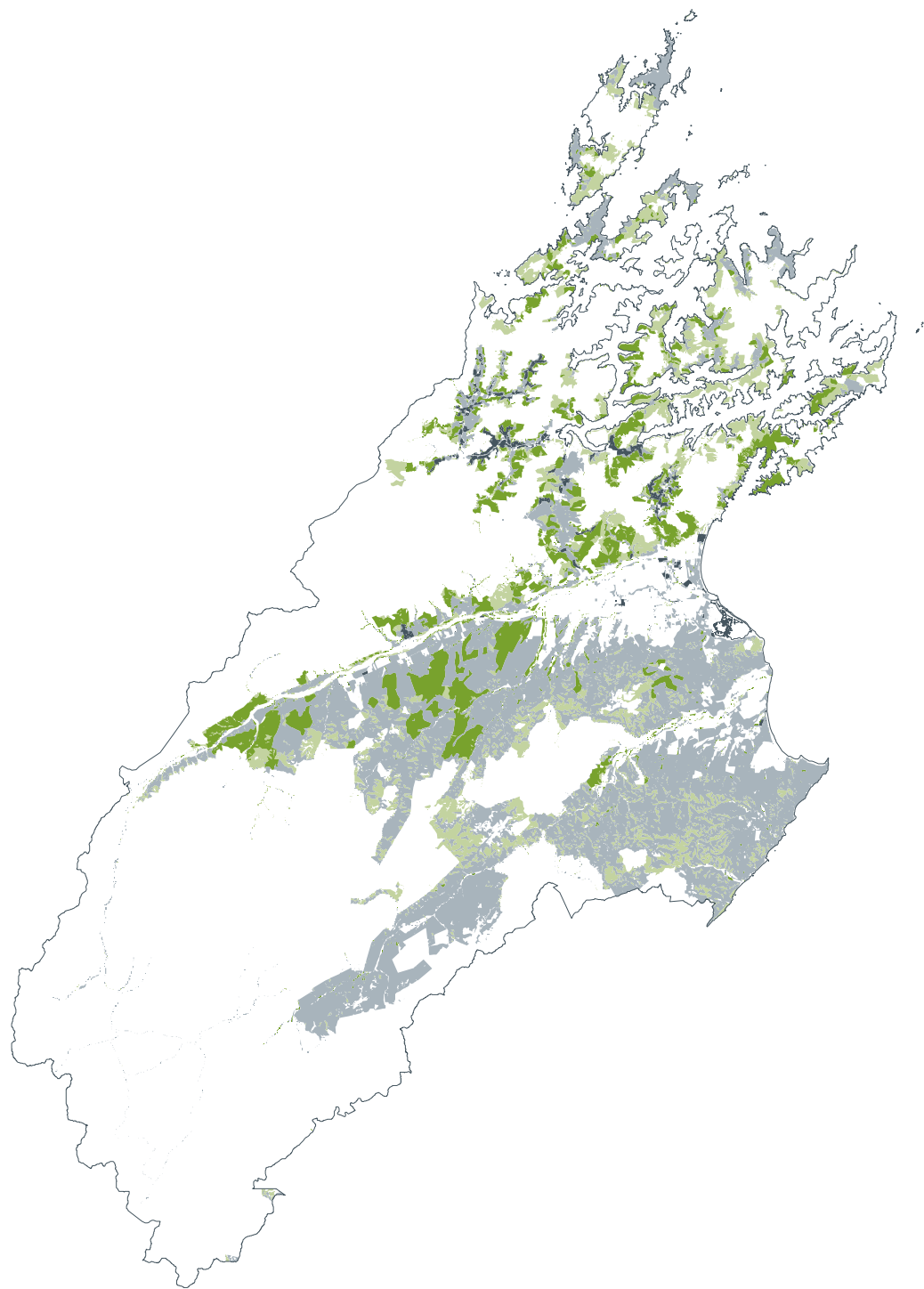
Difference between 2020 nutrient load  
compared with 1996 nutrient load

Nitrogen	+1 %
Phosphorus	-5 %

1996



2008



2020

