





## Manawatu-Whanganui

Change in land area between 1996 and 2020 (ha)

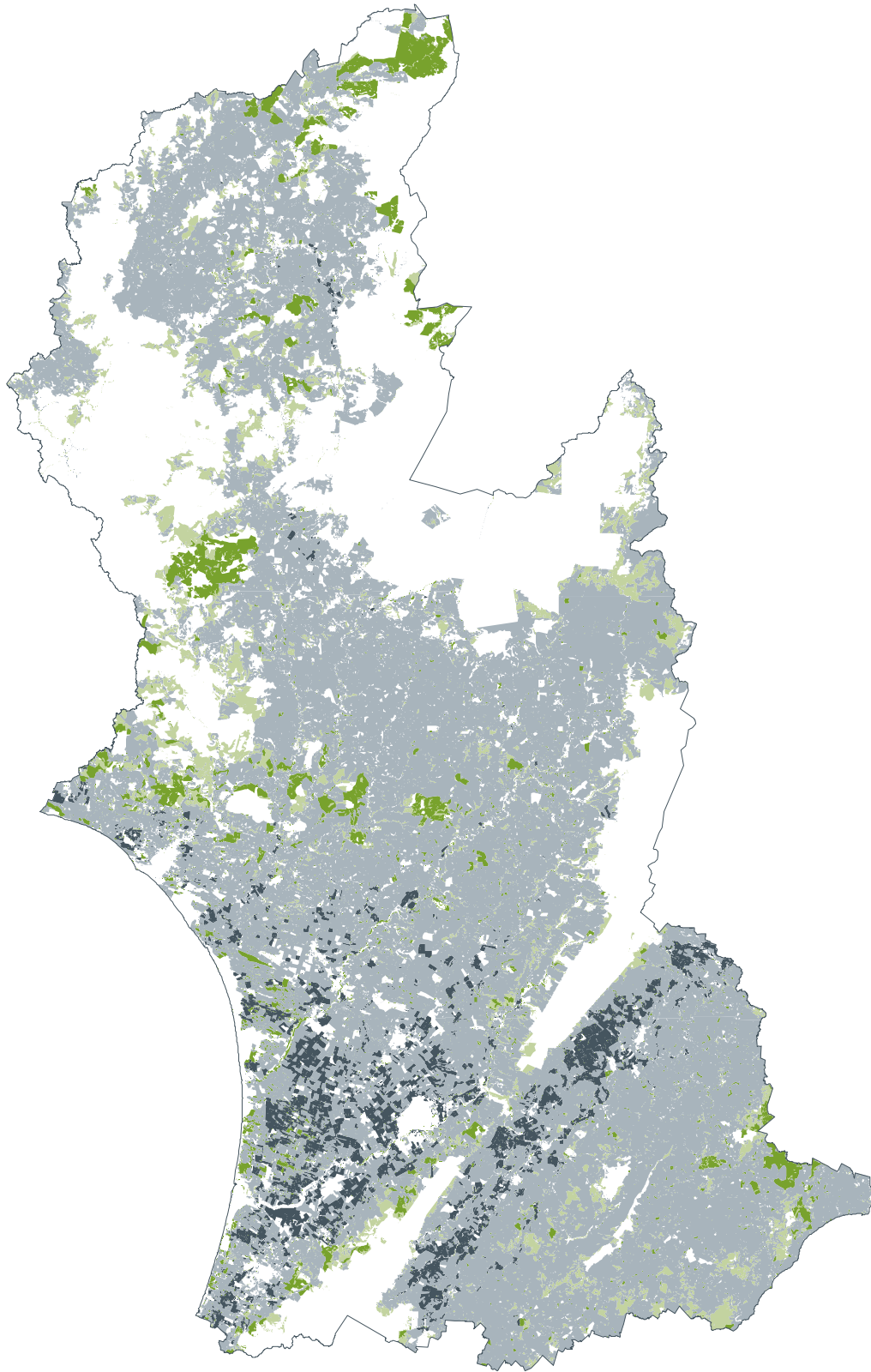
	Sheep/Beef	-175,500
	Dairy	+44,200
	Forestry	+36,600
	Scrub	+93,400

Difference between 2020 nutrient load  
compared with 1996 nutrient load

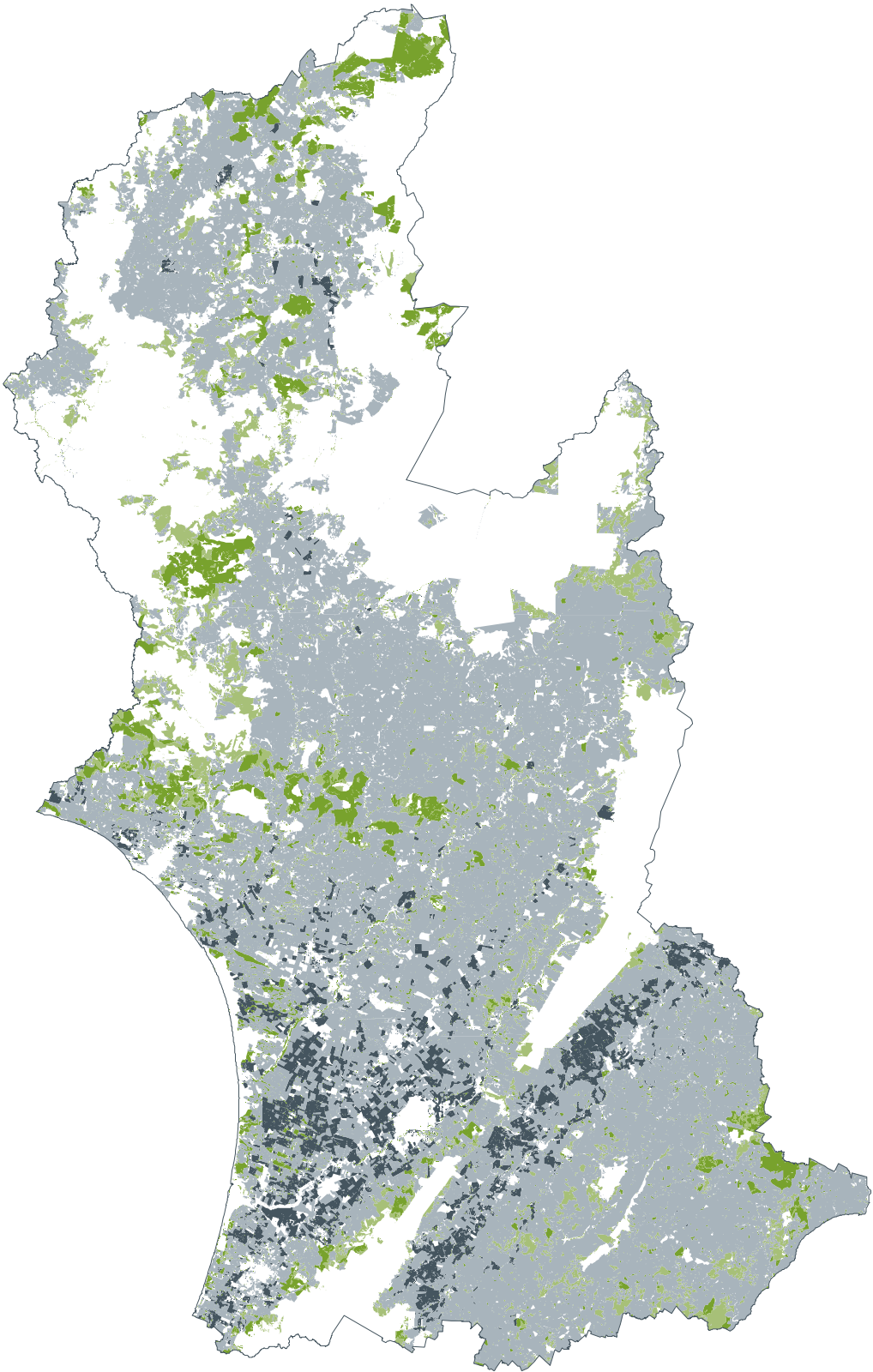
Nitrogen        +12 %

Phosphorus     -5 %

1996



2008



2020

