





Gisborne

Change in land area between 1996 and 2020 (ha)

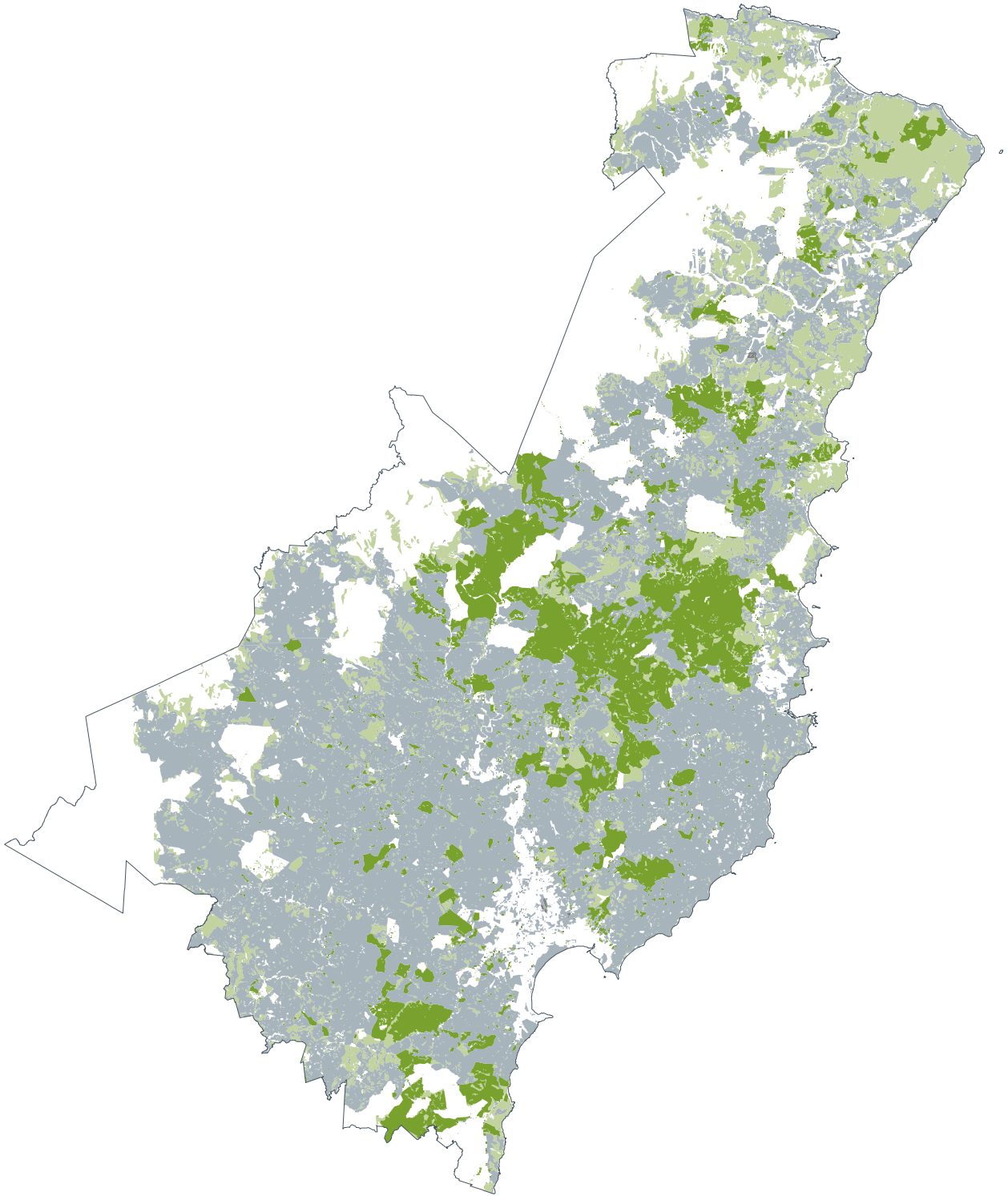
	Sheep/Beef	-100,800
	Dairy	+4,500
	Forestry	+90,500
	Scrub	+5,500

Difference between 2020 nutrient load
compared with 1996 nutrient load

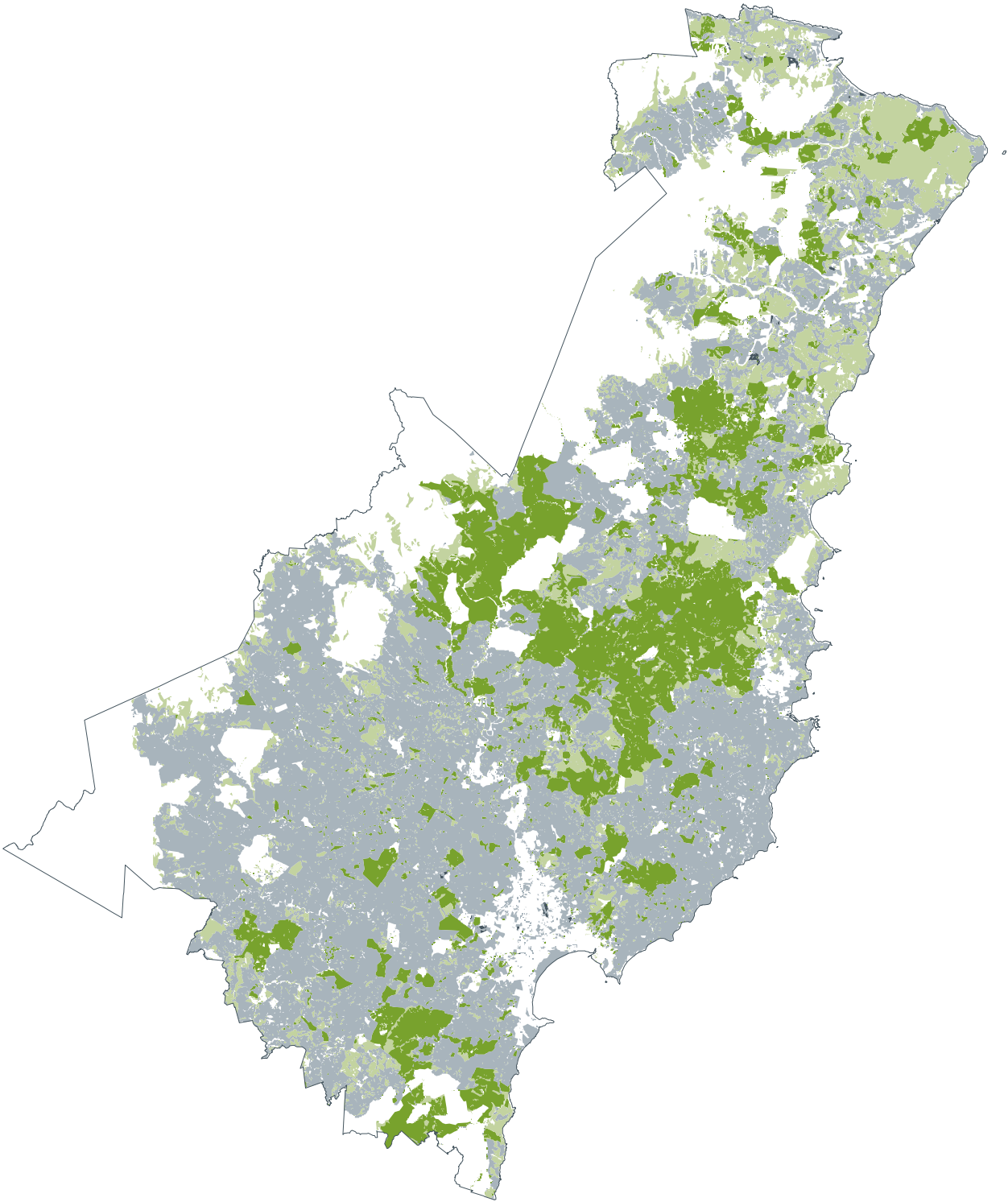
Nitrogen -3 %

Phosphorus -2 %

1996



2008



2020

