





Bay of Plenty

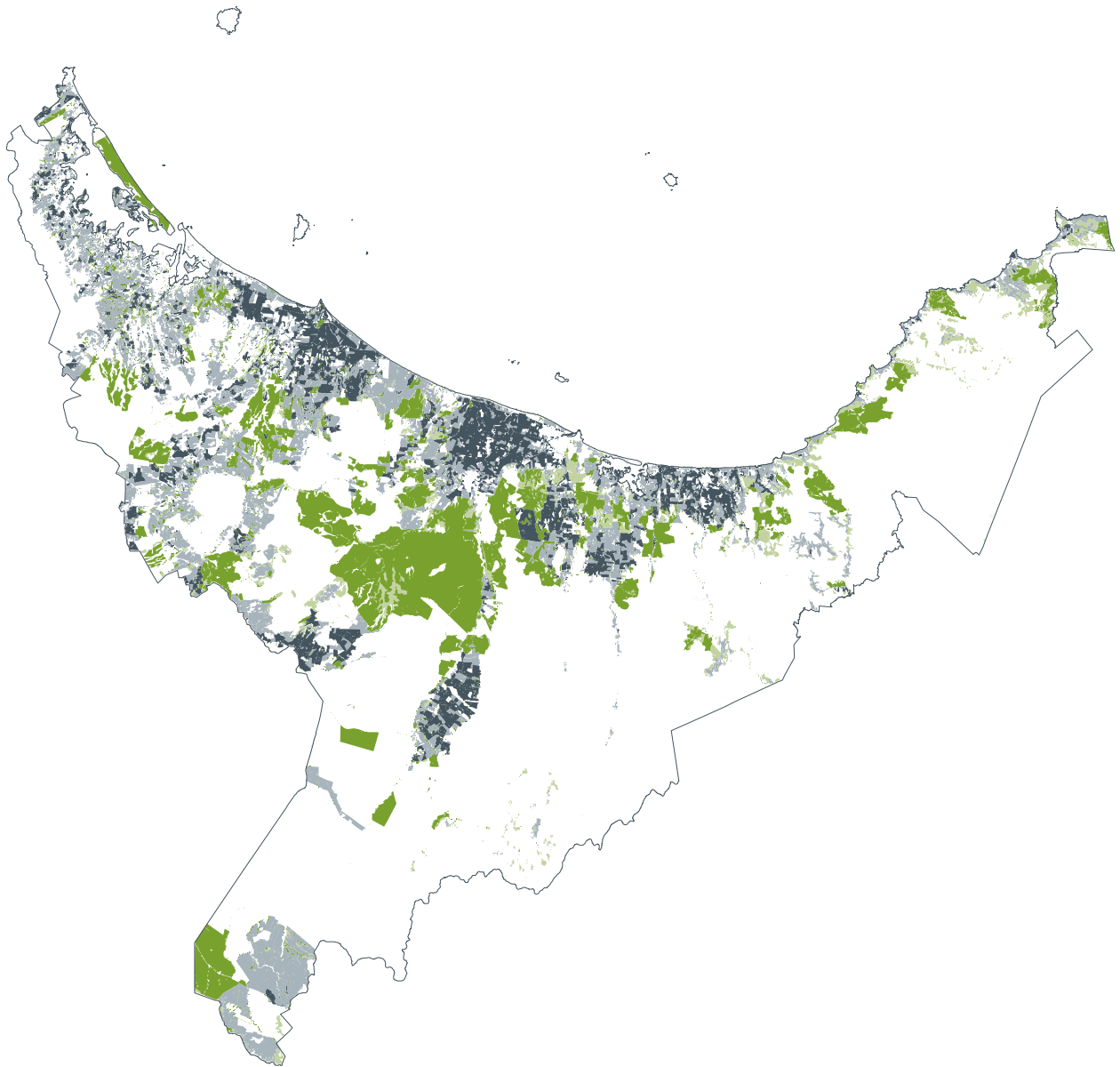
Change in land area between 1996 and 2020 (ha)

	Sheep/Beef	-28,900
	Dairy	+8,800
	Forestry	+20,400
	Scrub	-3,000

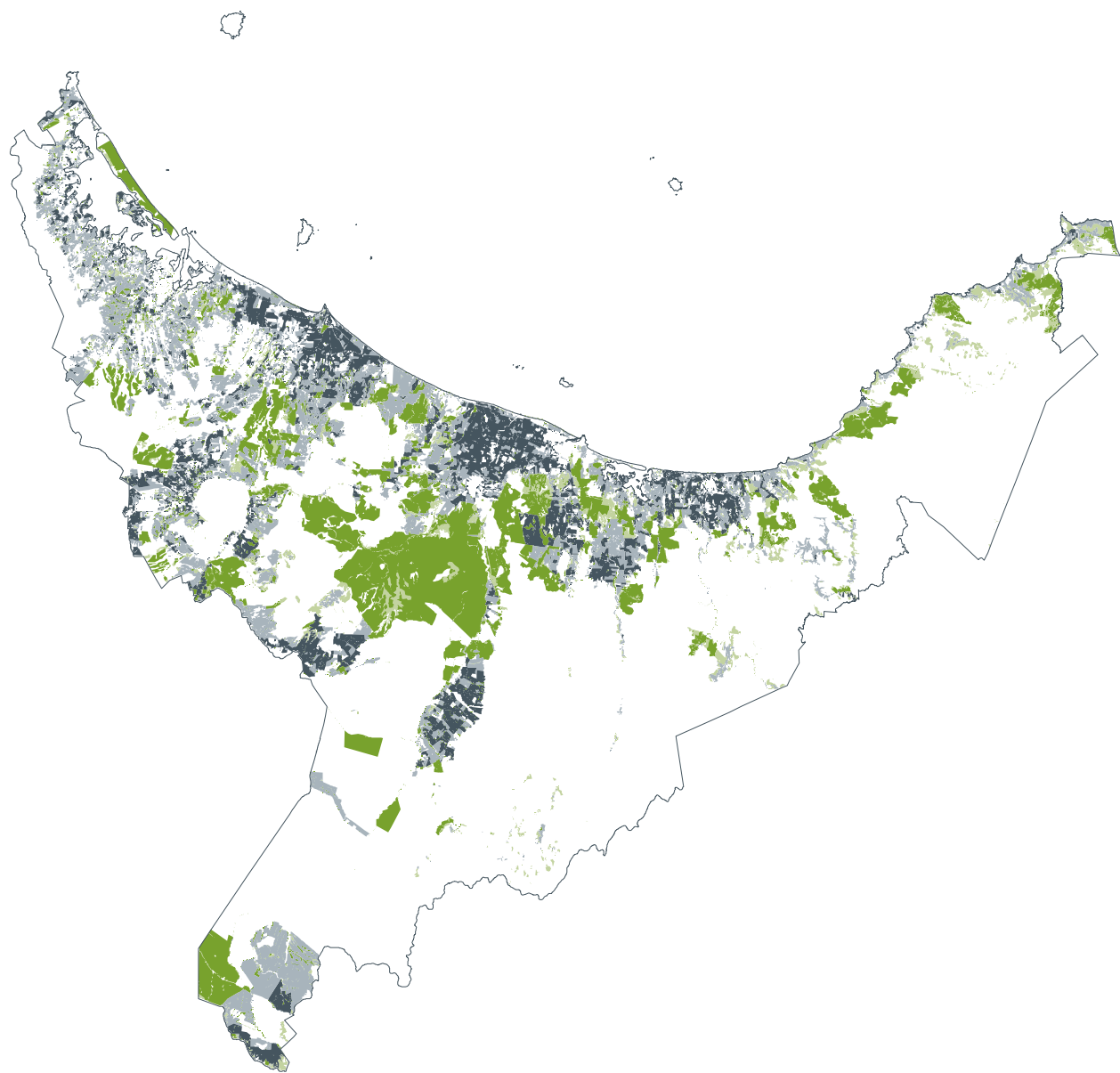
Difference between 2020 nutrient load
compared with 1996 nutrient load

Nitrogen	+6 %
Phosphorus	-2 %

1996



2008



2020

